

Venu 6 V2

Key features:

- Compact and unobtrusive appearance
- Rotatable 90°H x 60°V HF waveguide
- 6.5" low frequency driver
- 1" high frequency compression driver
- Textured polyurethane finish, optional custom colours
- Multiple internal M8 rigging points
- Perforated steel grille

Applications:

- Hotel, restaurant
- Bar, club, lounge

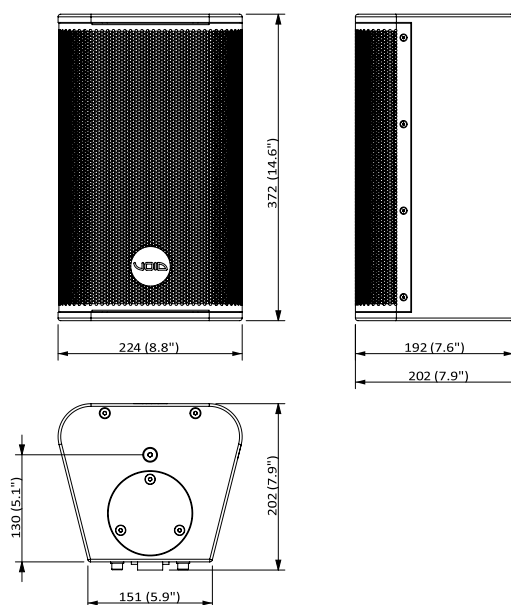


Featuring a 6.5" low frequency driver and a 1" high frequency compression driver, the design of the Venu 6 V2 has been enhanced both aesthetically and functionally. Offering a frequency response of 75 Hz – 19 kHz ± 3 dB and efficiency of 95 dB, this speaker is ideal for playing background music in bars and restaurants.

Many features make the passive two-way Venu 6 V2 convenient to install and use, including: the Easy Hang wall bracket that supports the enclosure, either vertically or horizontally; speakON™ and Phoenix connectors with link through for quick and reliable hook ups; the high frequency horn is rotatable allowing the correct dispersion to be maintained in horizontal or vertical mounting positions; M8 flying points; an optional top hat allowing mounting for use in touring applications; and a robust enclosure made entirely from 15 mm multi-laminate birch plywood.

Specifications

Frequency Response	75 Hz - 19 kHz ± 3 dB
Efficiency ¹	95 dB 1W/1m
Crossover Points	2.4 kHz passive
Nominal Impedance	8 Ω
Power Handling ²	200 W AES
Maximum Output ³	118 dB cont, 121 dB peak
Driver Configuration	1 x 6.5" LF, 1 x 1" HF compression driver
Dispersion	90°H x 60°V rotatable
Connectors	1 x Phoenix with link out and 1 x speakON™ with link out
Weight	9.5 kg (20.9 lbs)
Enclosure	15 mm birch plywood
Finish	Textured polyurethane
Grille	Perforated steel with foam filter
Rigging	Yoke bracket positions 4 x M8 fixing points for type 80 plate Optional top hat



¹ Measured in half space ² AES2 - 1984 compliant ³ Calculated

Venu 6 V2

Architectural specifications

The loudspeaker shall be a passive two-way system consisting of one high power 6.5" (165 mm), direct radiating, reflex loaded, low frequency (LF) transducer and 1" (25 mm) diameter composite plastic exit, high frequency (HF) compression driver mounted on a user rotatable elliptic horn in a trapezoidal enclosure fitted with a wrap around grille and rotatable badge.

Power handling shall be 200 W AES at a nominal impedance of 8 Ω . Crossover point shall be at 2.4 kHz using a 3rd order filter (18 dB per octave). The wiring connection shall be as follows: a removable, lockable wiring connector with four screw-down terminals (one pair for input and one pair for link through to another loudspeaker) to provide secure wiring and allow for pre-wiring of the connector before the installation (this connector should then screw lock to the enclosure for secure attachment). In addition, a Neutrik speakON™ NL4 shall also feature.

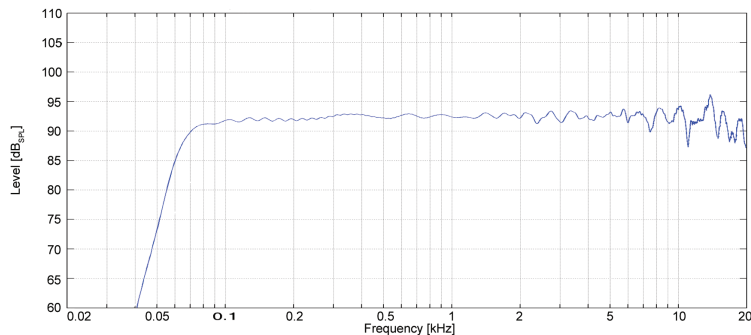
Performance specifications for a typical production unit shall be as follows: the usable on-axis bandwidth shall be 75 Hz to 19 kHz (± 3 dB) and shall average 90° directivity pattern on the horizontal axis and 60° on

the vertical one (-6 dB down from on-axis level) from 1 kHz to 12 kHz; and a maximum SPL of 121 dB peak measured at 1 m using IEC268-5 pink noise.

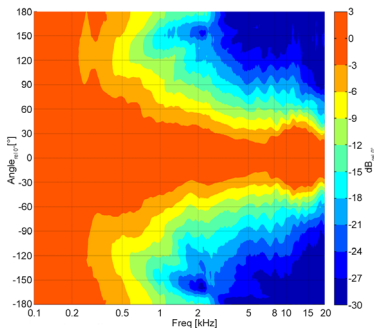
The high frequency transducer shall project it's sound through an elliptic horn with a 152 mm (6") baffle diameter to achieve pattern control and low distortion. The low frequency transducer shall be constructed on a cast aluminium frame, with a treated paper cone, 38.1 mm (1.5") voice coil, wound with copper wires on a high quality Kapton voice coil former, for high power handling and long-term reliability.

The enclosure shall be of a trapezoidal shape constructed from a 15 mm multi-laminate birch plywood, with a textured polyurethane finish and shall include integral threaded inserts for the fitment of wall and ceiling mounting hardware as well as removable cover plate for fixing an optional M20 top-hat. External dimensions of (W) 224 mm x (H) 372 mm x (D) 202 mm (8.8" x 14.6" x 7.9"). Weight shall be 9.5 kg (20.9 lbs).

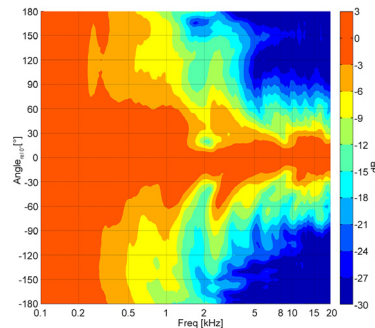
The loudspeaker shall be the Void Acoustics Venu 6 V2.



Frequency response (anechoic measurement)



Horizontal directivity isobars



Vertical directivity isobars