

Venu 8 V2

Key features:

- Passive 8" two-way surface mount loudspeaker
- Dual speakON™ and Phoenix connectors with link through for quick and reliable hook ups
- Rotatable high frequency horn
- Electronic high frequency protection for increased reliability
- M8 flying points for versatile suspension
- Optional top hat allowing mounting for use in touring applications
- Robust enclosure made entirely from 15 mm multi-laminate birch plywood

Applications:

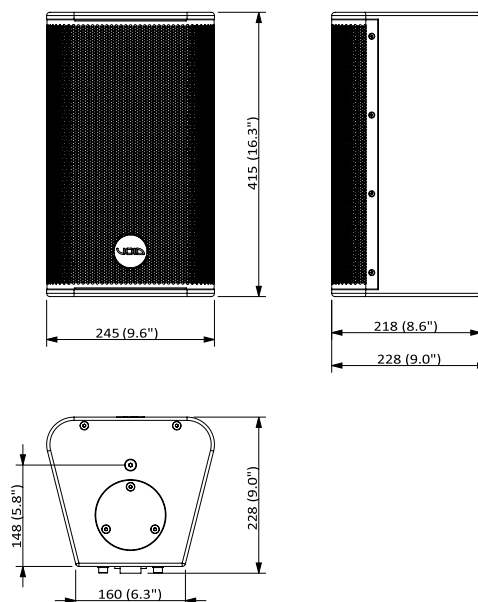
- Bar, club, lounge
- Hotel, restaurant



The 8" based Venu 8 V2 has been designed with noteworthy enhancements to both its aesthetics and functionality. Offering a frequency response of 70 Hz – 20 kHz ± 3 dB and efficiency of 97 dB, this loudspeaker is ideal for providing fill-in music in larger restaurants, bars and clubs.

Specifications

Frequency Response	70 Hz - 20 kHz ± 3 dB
Efficiency ¹	97 dB 1W/1m
Crossover Points	2.3 kHz passive
Nominal Impedance	8 Ω
Power Handling ²	300 W AES
Maximum Output ³	121 dB cont, 124 dB peak
Driver Configuration	1 x 8" LF, 1 x 1" HF compression driver
Dispersion	90°-60°H x 60°V rotatable
Connectors	1 x Phoenix with link out and 1 x speakON™ with link out
Weight	12 kg (26.5 lbs)
Enclosure	15 mm birch plywood
Finish	Textured polyurethane
Grille	Perforated steel with foam filter
Rigging	Yoke bracket positions 4 x M8 fixing points for type 80 plate Optional top hat



¹ Measured in half space ² AES2 - 1984 compliant ³ Calculated

Venu 8 V2

Architectural specifications

The loudspeaker shall be a passive two-way system consisting of one high power 8" (203.2 mm), direct radiating, reflex loaded, low frequency (LF) transducer and 1" (25 mm) diameter composite plastic exit, high frequency (HF) compression driver mounted on a user rotatable asymmetrical horn in a trapezoidal enclosure fitted with a wraparound grille and rotatable badge.

Power handling shall be 300 W AES at a nominal impedance of 8 Ω . Crossover point shall be at 2.3 kHz using a 3rd order filter (18 dB per octave). The wiring connection shall be as follows: a removable, lockable wiring connector with four screw-down terminals (one pair for input and one pair for link through to another loudspeaker) to provide secure wiring and allow for pre-wiring of the connector before the installation (this connector should then screw lock to the enclosure for secure attachment). In addition, a Neutrik speakON™ NL4 shall also feature.

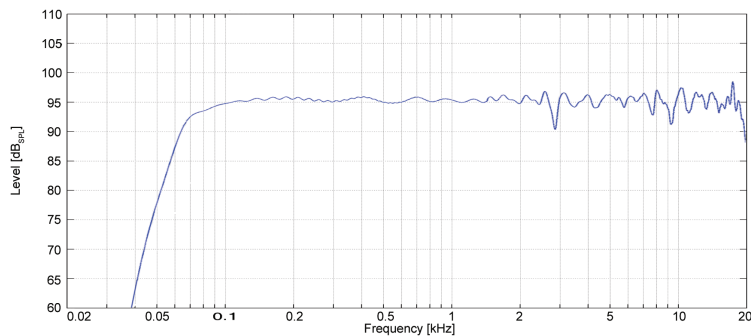
Performance specifications for a typical production unit shall be as follows: the usable on-axis bandwidth shall be 70 Hz to 20 kHz (± 3 dB) and shall average 90° to 60° directivity pattern on the horizontal axis and 60°

on the vertical one (-6 dB down from on-axis level) from 1 kHz to 12 kHz; and a maximum SPL of 124 dB peak measured at 1 m using IEC268-5 pink noise.

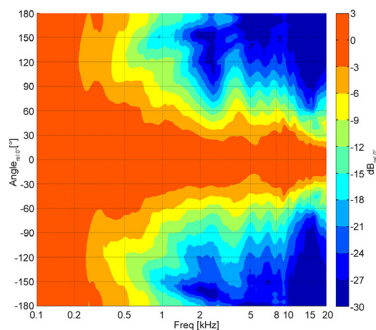
The high frequency transducer shall project it's sound through an asymmetrical horn with a 152 mm (6") baffle diameter to achieve pattern control and low distortion. The low frequency transducer shall be constructed on a cast aluminium frame, with a treated paper cone, 50.8 mm (2") voice coil, wound with copper wires on a high quality Kapton voice coil former, for high power handling and long-term reliability.

The enclosure shall be of a trapezoidal shape constructed from a 15 mm multi-laminate birch plywood, with a textured polyurethane finish and shall include integral threaded inserts for the fitment of wall and ceiling mounting hardware as well as removable cover plate for fixing an optional M20 top-hat. External dimensions of (W) 245 mm x (H) 415 mm x (D) 228 mm (9.6" x 16.3" x 9"). Weight shall be 12 kg (26.5 lbs).

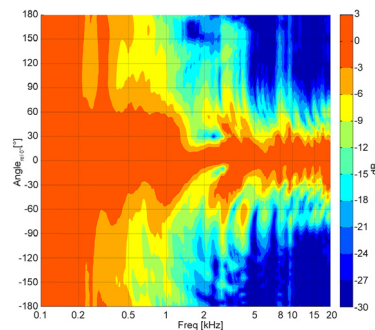
The loudspeaker shall be the Void Acoustics Venu 8 V2.



Frequency response (anechoic measurement)



Horizontal directivity isobars



Vertical directivity isobars